



Rbee Solar

Photovoltaic production monitoring for you and your customers

Copyright 2003 - EUMETSAT



- Installation in 10 min
- Built-in internet connection
- All-in-one solution
- Fault detection
- Probe-less radiation analysis
- Integration with your site

Control and prevent risks



Day-to-day production monitoring

Actual production and comparison with theoretical

Visual and characteristics of the installation

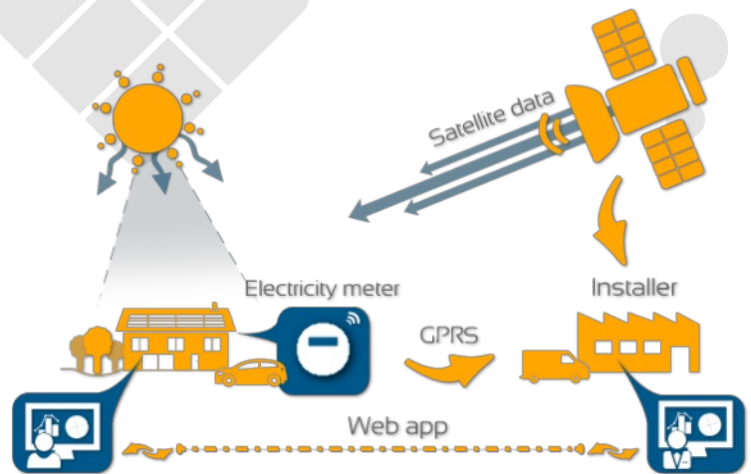
Alerts in the event of a fault



Production control by satellite image analysis

Rbee Solar analyses daily the satellite images of your installations in order to calculate the radiation in the plane of the photovoltaic modules

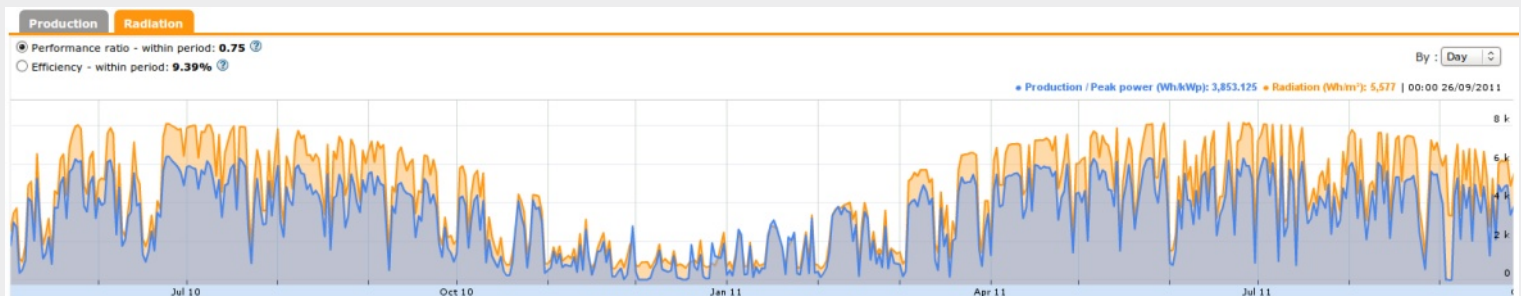
Email alerts in case of low performance ratio

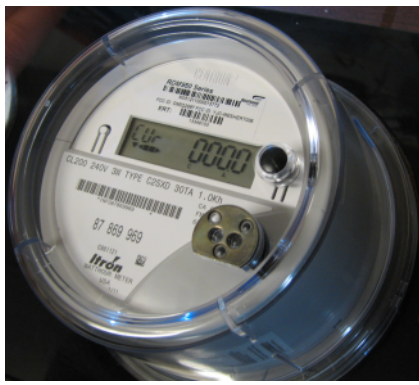


© RTONE - 2012

Radiation is calculated hour by hour depending on the location, orientation and slope of the roof

View production and compare it with radiation





CENTRON® I I METER

Accuracy: 0.5% (ANSI C12.20 0.5 accuracy class)

Voltage: 240V - 60Hz

Current: 200A

Environment: -40°C +85°C

Communication: GSM/GPRS

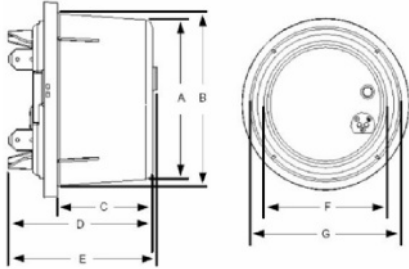
Power requirements: Voltage Rating: 120 V, 240 V Operating Voltage: ±20% (60Hz)

Frequency: 60 Hz, (50 Hz) Operating Range: ± 3 Hz

FCC: Part 15

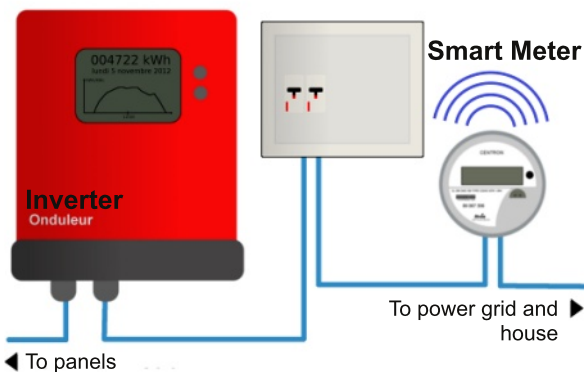
Support Meter Forms: Class 200: 2S

3 years guarantee



	A	B	C	D	E	F	G
INCH	14.4	6.296	3.472	5.272	5.45	5.677	6.296
CM	5.677	16	8.8	13.4	13.8	14.4	16

© RTONE - 2012



Frequently Asked Questions

Is Rbee Solar compatible with all makes of inverters?

Yes, using an electric meter permits universal monitoring, regardless of make of inverter.

How do the meters communicate their data?

The meters transmit their data twice a day thanks to their built-in GPRS modem.

Is a subscription with a mobile operator required?

No, Rtone handles all your GPRS subscriptions. Each meter is delivered with a SIM card and a 2-year subscription.

Does the system work with several inverters?

Yes, monitoring will be carried out on the whole of the production and not inverter by inverter.

Is the metering value certified?

Yes, the meters are all ANSI C12.20 0.5 accuracy class.